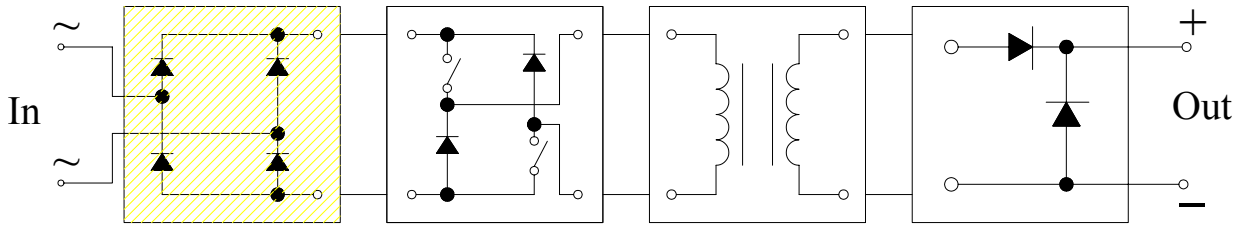


Raddrizzatore a Ponte Monofase Power Single Phase Bridge Rectifier

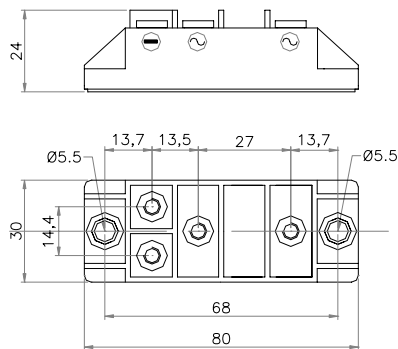
Serie MMS / Series MMS



Tipo / Type	Iout	Vout(Max)	Vrrm	R _{Tj-c} Total	Vac isol t=60sec	IMS
	A	V	V	°C/W	V	mm
MMS 30.16/FF/FIX5	30	600	1600	0.79	2000	1.6
MMS 30.16/FS/FIX5	30	600	1600	0.79	2000	1.6
MMS 30.16/SF/FIX5	30	600	1600	0.79	2000	1.6
MMS 30.16/SS/FIX5	30	600	1600	0.79	2000	1.6
MMS 60.16/FF/FIX5	60	600	1600	0.565	2000	1.6
MMS 60.16/FS/FIX5	60	600	1600	0.565	2000	1.6
MMS 60.16/SF/FIX5	60	600	1600	0.565	2000	1.6
MMS 60.16/SS/FIX5	60	600	1600	0.565	2000	1.6

FF: In=Faston Out=Faston	FS: In=Faston Out= Screw(M5)	SF: In=Screw(M5) Out=Faston	SS: In=Screw(M5) Out=Screw(M5)	FIX5: Hole for Srew M5
---------------------------------------	---	--	---	----------------------------------

MMS 30.16 SS FIX5



MMS 60.16 SS FIX5

