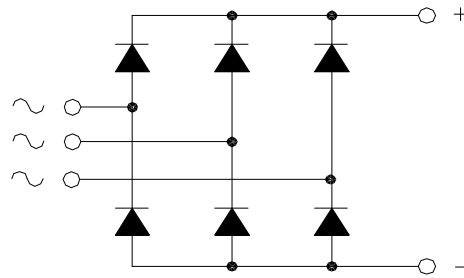


MTS75

POWER RECTIFIER BRIDGE

Output Current **75 A**



V_{RRM}	V_{RSM}	P/N
400	500	MTS75.04
800	900	MTS75.08
1200	1300	MTS75.12
1400	1500	MTS75.14
1600	1700	MTS75.16

Features

Low forward voltage diodes for high surge capability
Low thermal impedance packaging
Electrically insulated case

Applications

Input rectifier for variable frequency drives
Battery charger rectifiers
Three phase rectifier for power supplies
Rectifiers for DC motor fields supplies

Diodes characteristics		Conditions	T_j [°C]	Value
I_{RRM}	Max repetitive peak reverse current	$V = V_{RRM}$	150	4 mA
$V_{F(TO)}$	Threshold voltage		150	0,9 V
r_F	Forward slope resistance		150	7,0 mΩ
V_{FM}	Peak forward voltage, max	$I_F = 100A$	25	1,5 V
I_{FSM}	Surge forward current	Half sine wave, 10 ms	150	700 A
I^2t	Max I^2t for fusing		150	2450 A ² s
T_{jmax}	Operating junction temperature			-40 / 150 °C
$R_{th(j-c)}$	Thermal resistance (junction to case)	DC operation		1,04 °C/W
$R_{th(j-c)}$	Thermal resistance (junction to case)	Rectangular wave 180° conduction		1,16 °C/W

Module characteristics		Conditions	Value
I_D	DC output current	$T_c = 95$ °C	75 A
I_D	DC output current	$T_a = 40$ °C ; freely suspended	5 A
V_{INS}	RMS Insulating voltage	50 / 60 Hz $t = 1$ s ($i < 1$ mA)	3600 V
V_{INS}	RMS Insulating voltage	50 / 60 Hz $t = 60$ s ($i < 1$ mA)	3000 V
$R_{th(j-c)}$	Thermal resistance (junction to case)	DC operation	0,261 °C/W
$R_{th(j-c)}$	Thermal resistance (junction to case)	Rect. wave 180° conduction	0,290 °C/W
$R_{th(c-h)}$	Thermal resistance (case to heatsink)	Mounting surface flat, smooth and greased	0,115 °C/W
$R_{th(j-a)}$	Thermal resistance (junction to ambient)	Freely suspended or mounted on an insulator	9,0 °C/W
$R_{th(j-a)}$	Thermal resistance (junction to ambient)	Mounted on a painted metal sheet 250x250x1 BM	3,8 °C/W
T_{stg}	Max storage temperature		150 °C
W	Weight		137 g
M_1	Mounting torque, ± 15 %		4,5 N·m
			40 lb·inch
M_2	Terminal connection torque, ± 15 %		3,0 N·m
			26 lb·inch

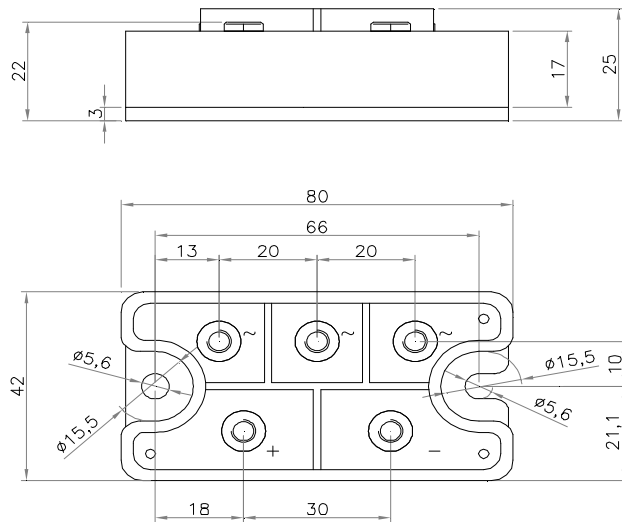
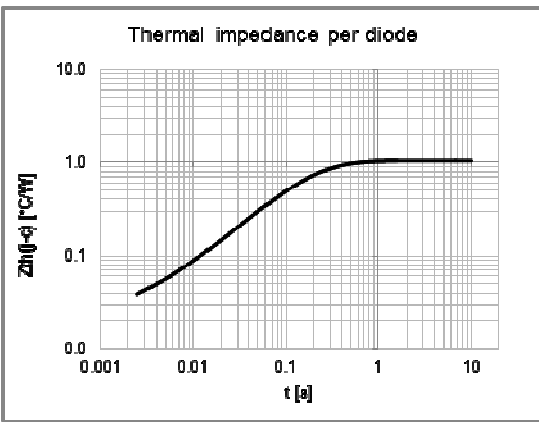
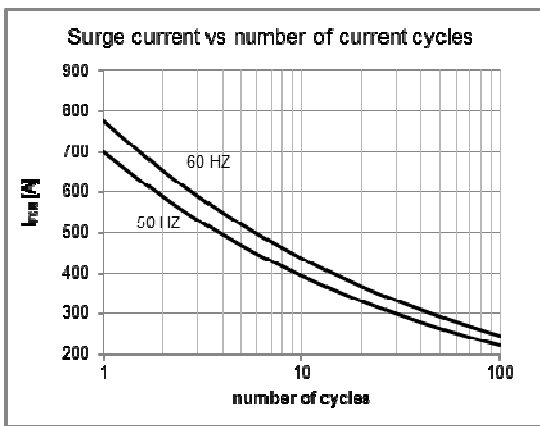
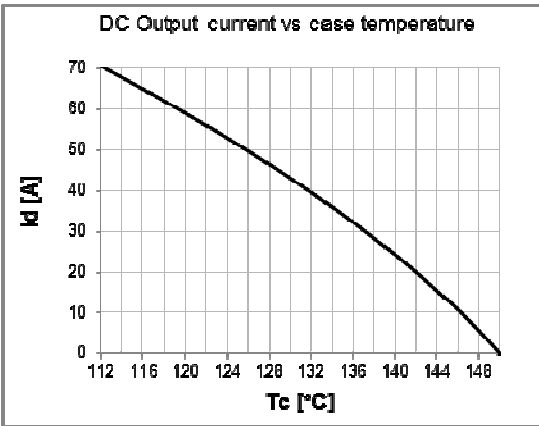
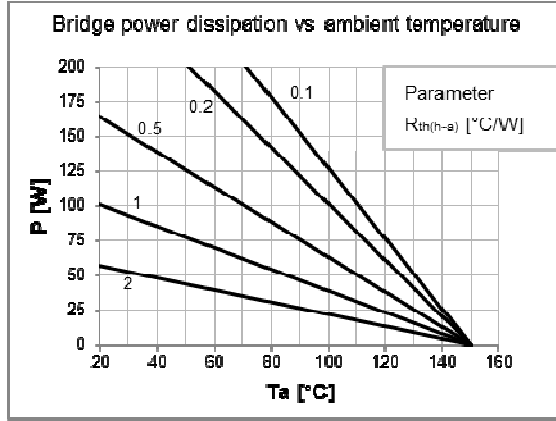
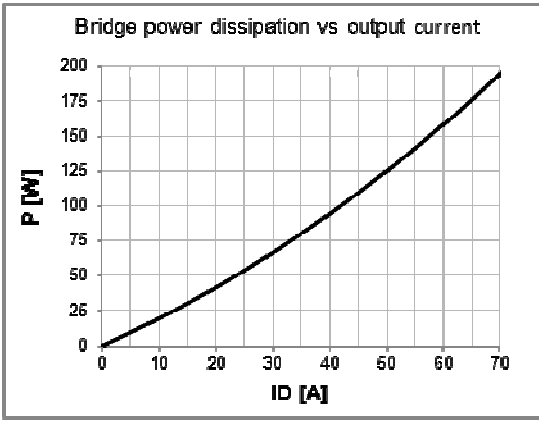


Fig.1 MTS75.04-SS5-FIX5-HP-P66-TI
Code:970000750000
MTS75.06-SS5-FIX5-HP-P66-TI
Code:970000750001
MTS75.08-SS5-FIX5-HP-P66-TI
Code:970000750002
MTS75.12-SS5-FIX5-HP-P66-TI
Code:970000750003
MTS75.16-SS5-FIX5-HP-P66-TI
Code:970000750004

Voltage:04=400V 08=800V 12=1200V 14=1400V 16=1600V

Power fix: **Mounting fix:**

SS=Screw (M5) FIX= Ø5,5