

MMS75.16

Power Rectifier bridge

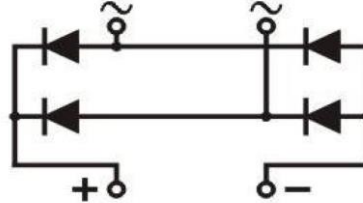
Features:

- International standard package
- Low forward voltage drop
- Isolation voltage 2500V ~
- Simple mounting
- UL recognized, file no. E312789



Typical applications:

- DC power suppliers for apparatus device
- Input rectifying power supply for PWM converters
- Inverter welders
- Battery chargers



Symbol	Characteristics	Test Conditions	Value			Unit
			Min	Typ	Max	
$V_{RSM/DSM}$	Non-repetitive reverse/forward blocking voltage	$T_j = 25^\circ\text{C}$			1700	V
$V_{RRM/DRM}$	Repetitive reverse/forward blocking voltage	$T_j = 25^\circ\text{C}$			1600	V
I_D	Rectifier bridge output current	Three-phase whole wave rectifying circuit, $T_c = 100^\circ\text{C}$			75	A
I_{RRM}	Repetitive peak reverse current	at V_{RRM} $T_j = 150^\circ\text{C}$			5	mA
I_{FSM}	Forward surge current	10ms half sine wave, $T_j = 150^\circ\text{C}$			1000	A
$I^2 t$	$I^2 t$ for fusing coordination	$V_R = 0.6 V_{RRM}$, $T_j = 150^\circ\text{C}$			5000	A^2s
V_{FO}	Threshold voltage	$T_j = 150^\circ\text{C}$			0.90	V
r_T	Forward slope resistance	$T_j = 150^\circ\text{C}$			5	$\text{m}\Omega$
V_{FM}	Peak forward voltage	$T = 25^\circ\text{C}$; $I_T = 112\text{A}$		1.00	1.20	V
$R_{th(j-c)}$	Thermal resistance junction to case	per module			0.39	$^\circ\text{C}/\text{W}$
$R_{th(c-s)}$	Thermal resistance case to sink	per module			0.07	$^\circ\text{C}/\text{W}$
V_{ISO}	Isolation voltage	50Hz, RMS, $t = 1\text{min}$			2500	V
F_M	Mounting torque - copper plate (M6)		4		6	N·m
	Mounting torque - terminal (M5)		2.5		4.5	N·m
T_{stg}	Storage Temperature		-40		150	$^\circ\text{C}$
T_j	Operating Temperature		-40		150	$^\circ\text{C}$
W_t	Weight			190		g
Outline	M18					

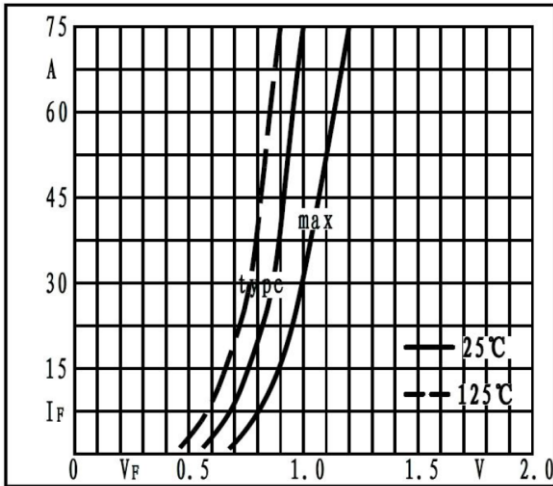


Fig1. Forward characteristics

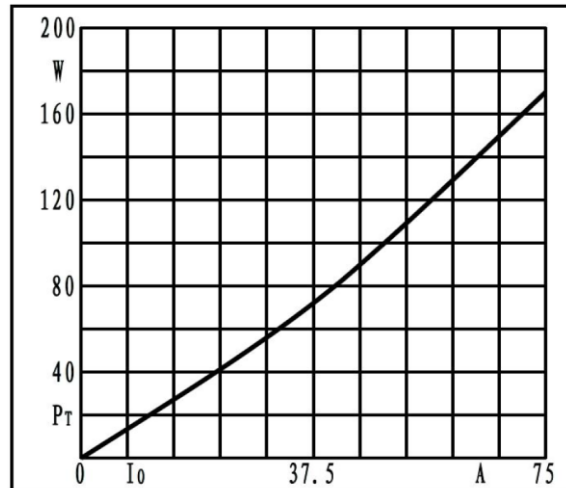


Fig2. Power dissipation

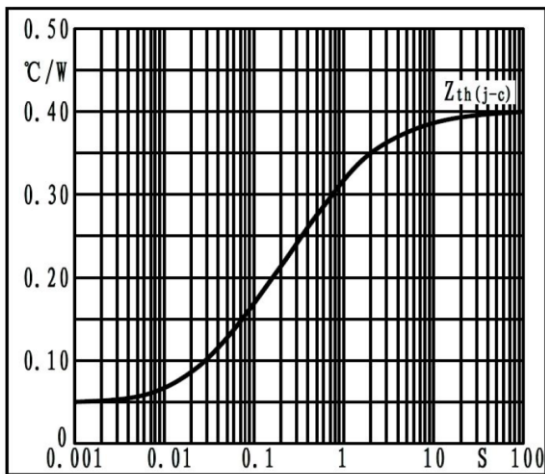


Fig3. Transient thermal impedance

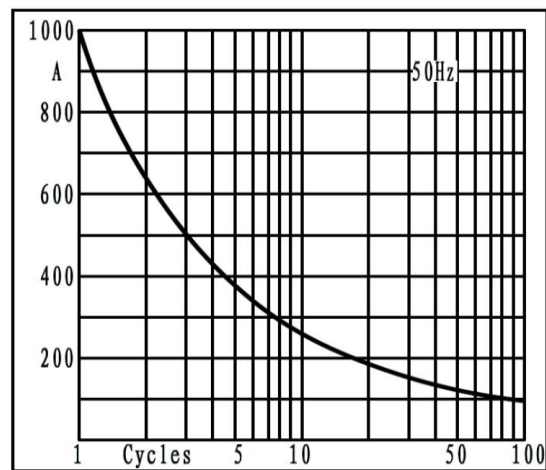


Fig4. Max non-repetitive forward surge current

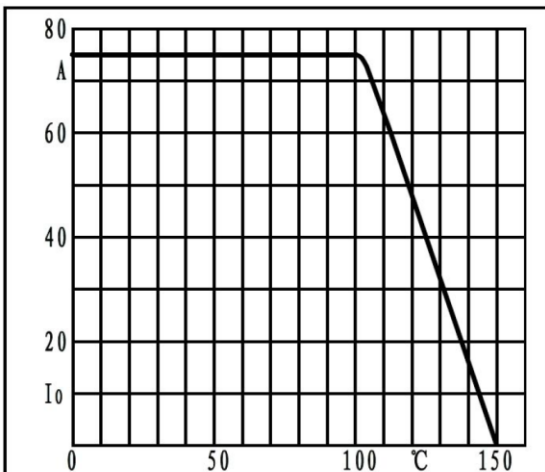
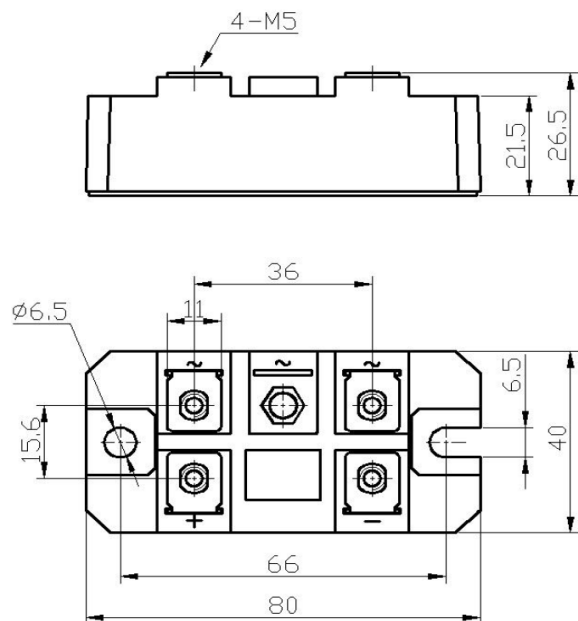


Fig5. Forward current derating curve



S.CO.M.E.S. Srl

Via Enrico Mattei, 6/8 - 26283 - Castiglione d'Adda (LO) - Italy

Phone: +39 0377 901243 Fax: +39 0377 900206